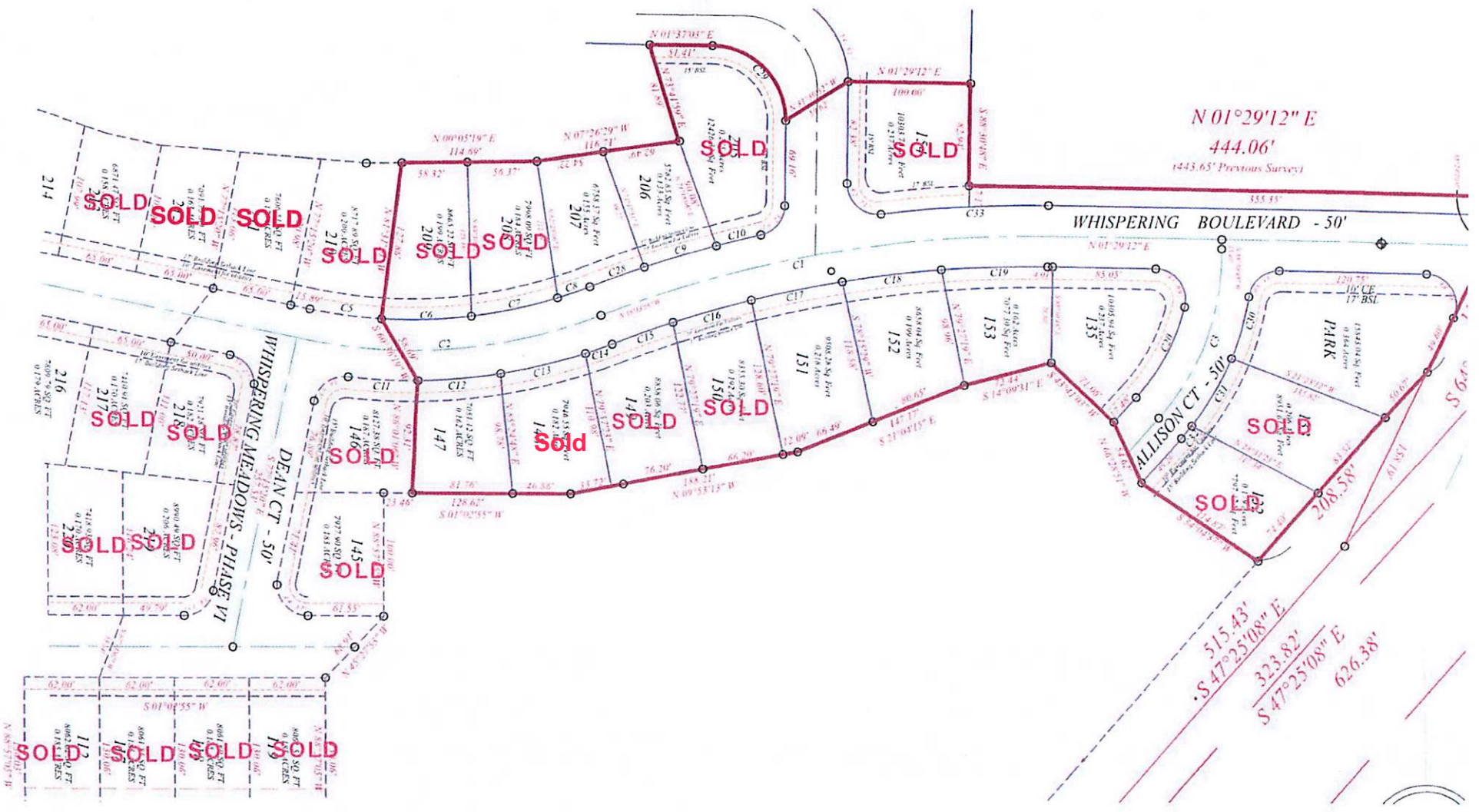


W71



N 01° 29' 12" E
 444.06'
 (443.65' Previous Survey)

WHISPERING BOULEVARD - 50'

ALLISON CT - 50'

WHISPERING MEADOWS - PHASE VI
 DEAN CT - 50'

S 47° 25' 08" E
 323.82'
 S 47° 25' 08" E
 626.38'

PARK